

Commune de Saint-Sulpice-des-Landes

Atlas des zones humides et des cours d'eau

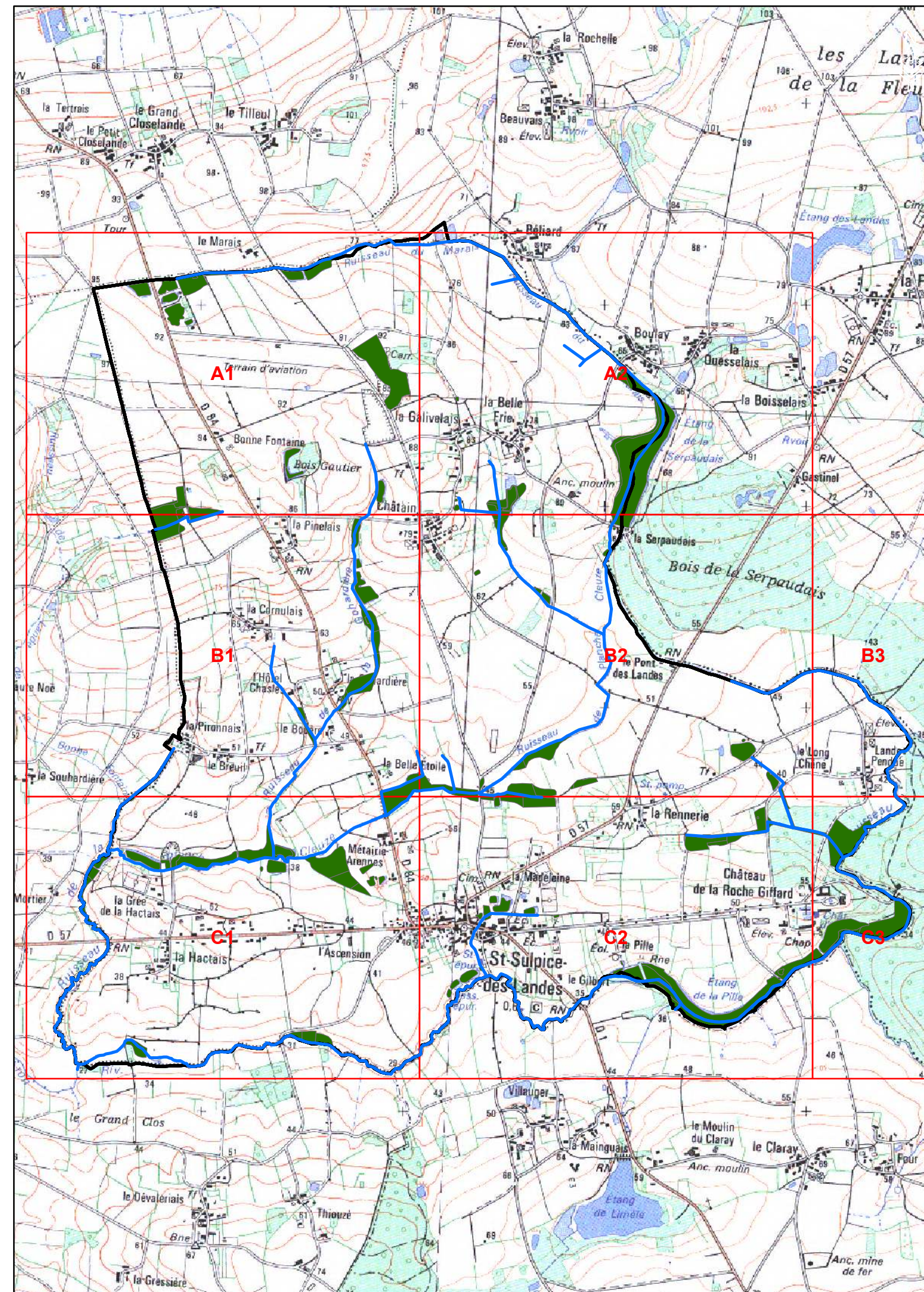
Atlas cartographique des zones humides

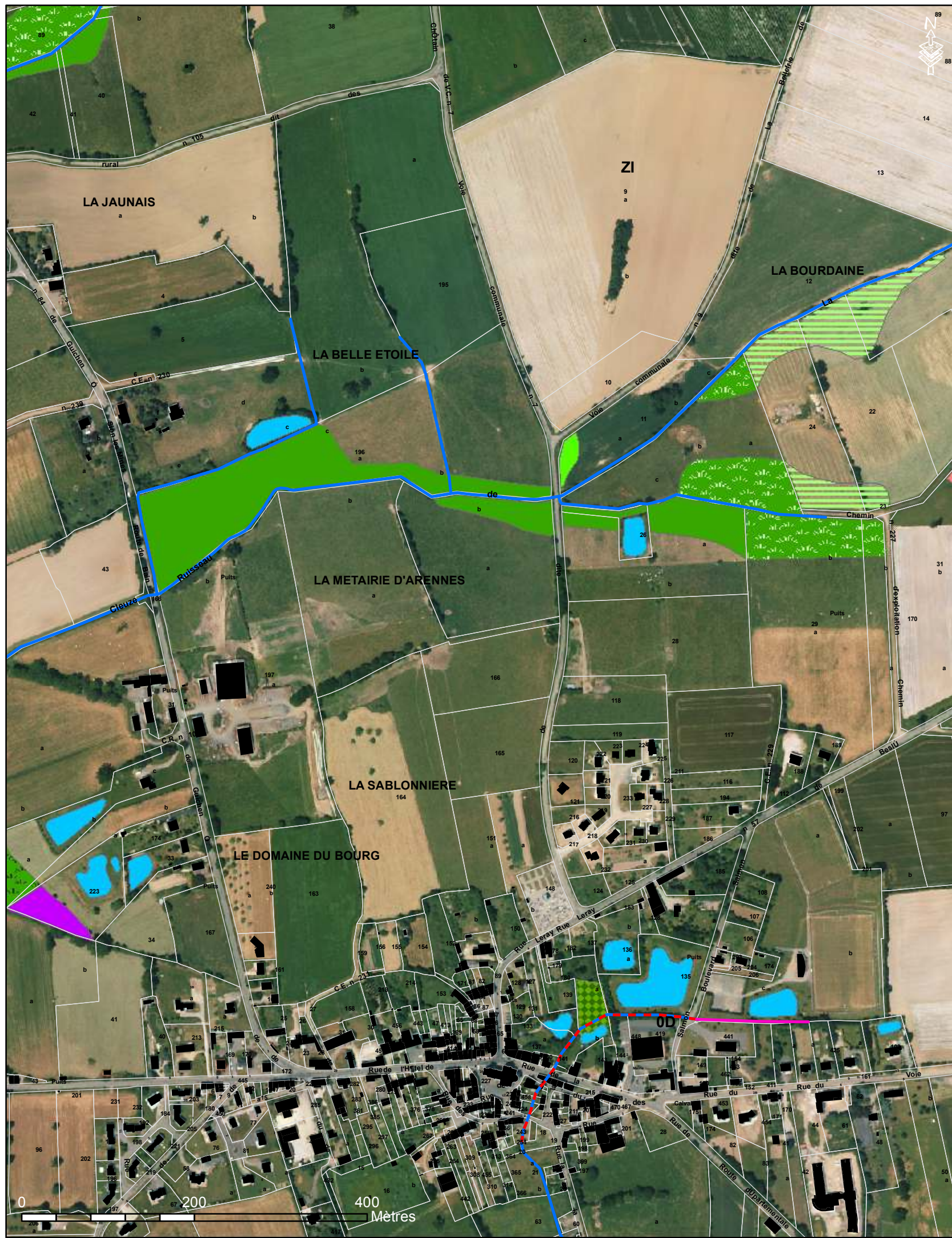
Projection cartographique Lambert II étendu
Echelle : 1/5000

Sources : Direction générale des impôts (cadastre),
dmEAU (zones humides et cours d'eau)



Réalisé par dm.EAU
10, rue du Douet aux Merles
35150 JANZÉ
02.99.47.65.63








Légende

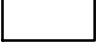


Zones humides selon le code CORINE Biotopes

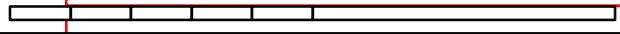
-  Lagunes d'assainissement
-  Plans d'eau (22.1)
-  Prairies humides eutrophes (37.2)
-  Prairies à jonc diffus (37.217)
-  Prairies à jonc acutiflore (37.22)
-  Pâtures à grands joncs (37.241)
-  Bois de bouleaux humides (41.B11)
-  Forêts riveraines, forêts et fourrées humides (44)
-  Formations riveraines de saules (44.1)
-  Forêt de frênes et d'aulnes (44.3)
-  Bois marécageux (44.9)
-  Bois marécageux d'aulnes (44.91)
-  Saussaies marécageuses (44.92)
-  Typhaies (53.13)
-  Prairies humides améliorées (81.2)
-  Cultures (82.1)
-  Plantations de pins (83.3112)
-  Plantations de peupliers à strate herbacée élevée (83.3211)
-  Carrières (86.41)

Réseau hydrographique

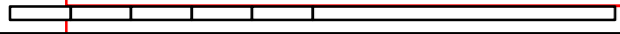
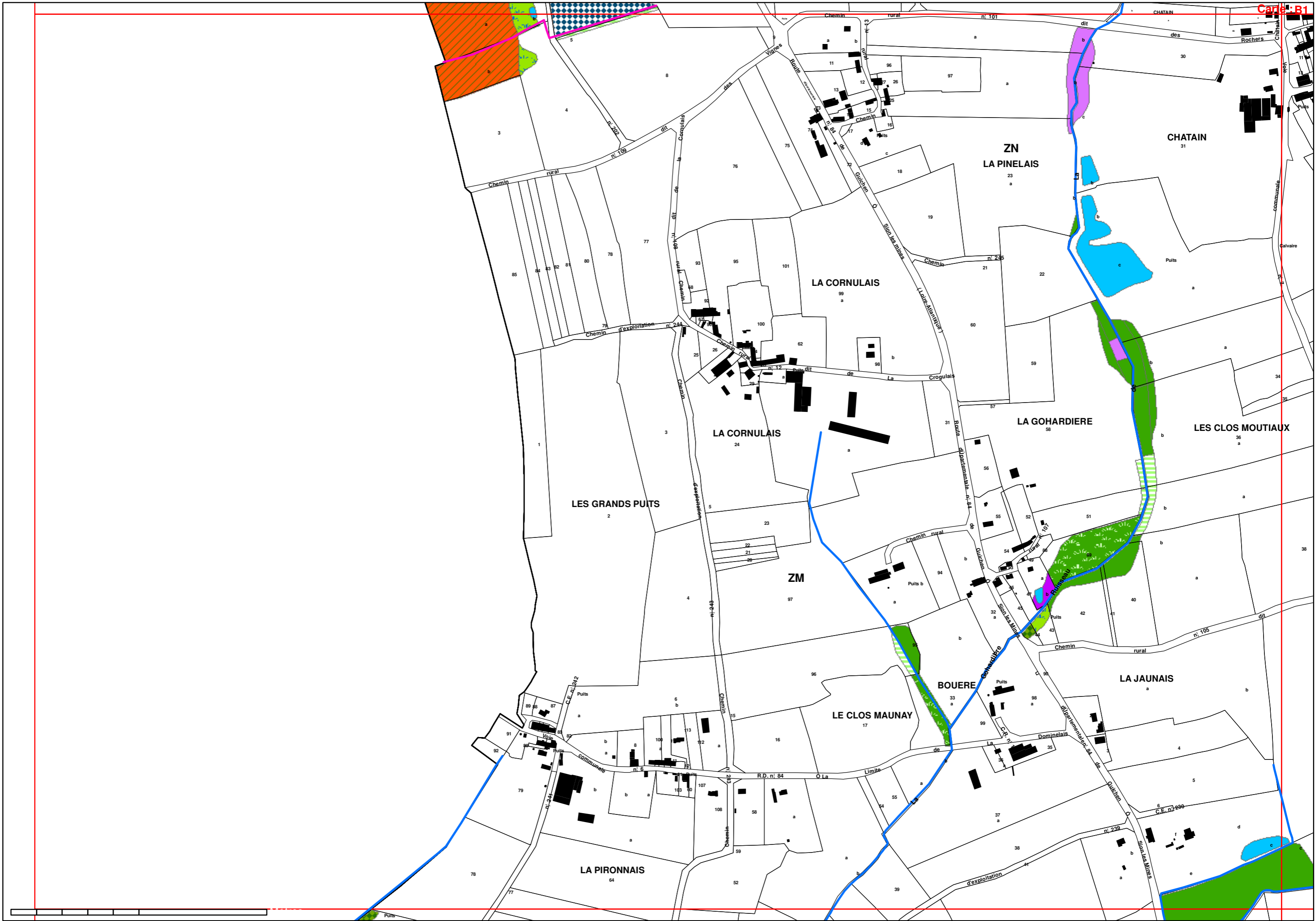
-  IGN
-  Ajout
-  Busé

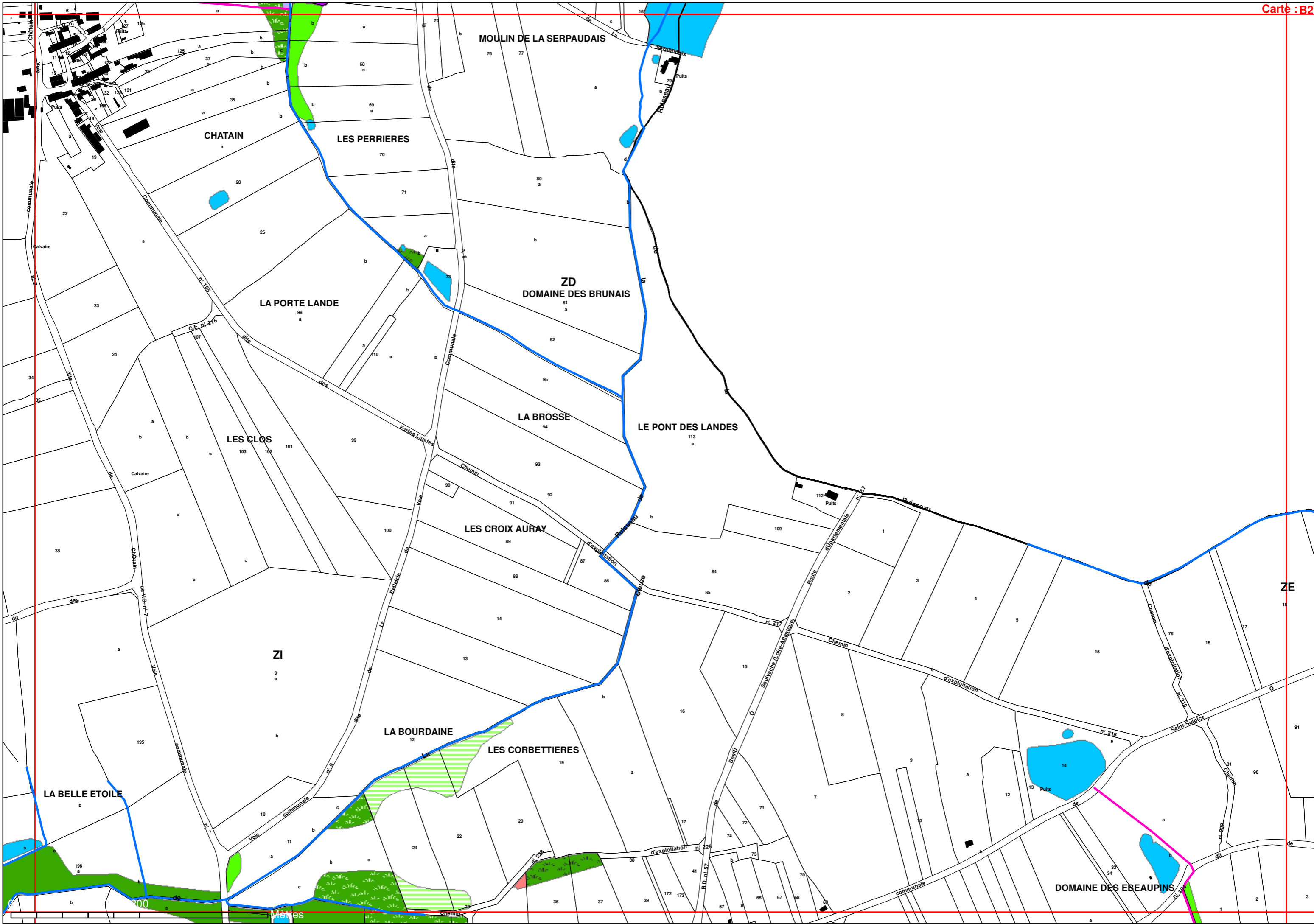
Éléments du cadastre

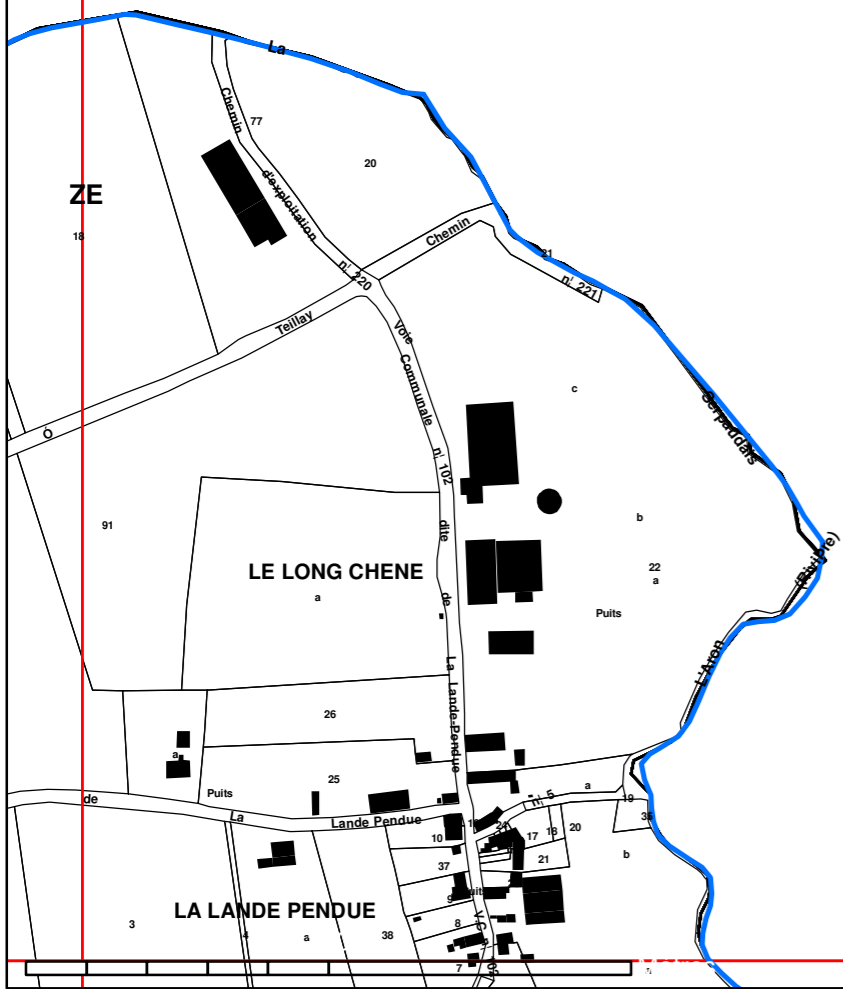
-  Limite communale
-  Bâti
-  Parcelles

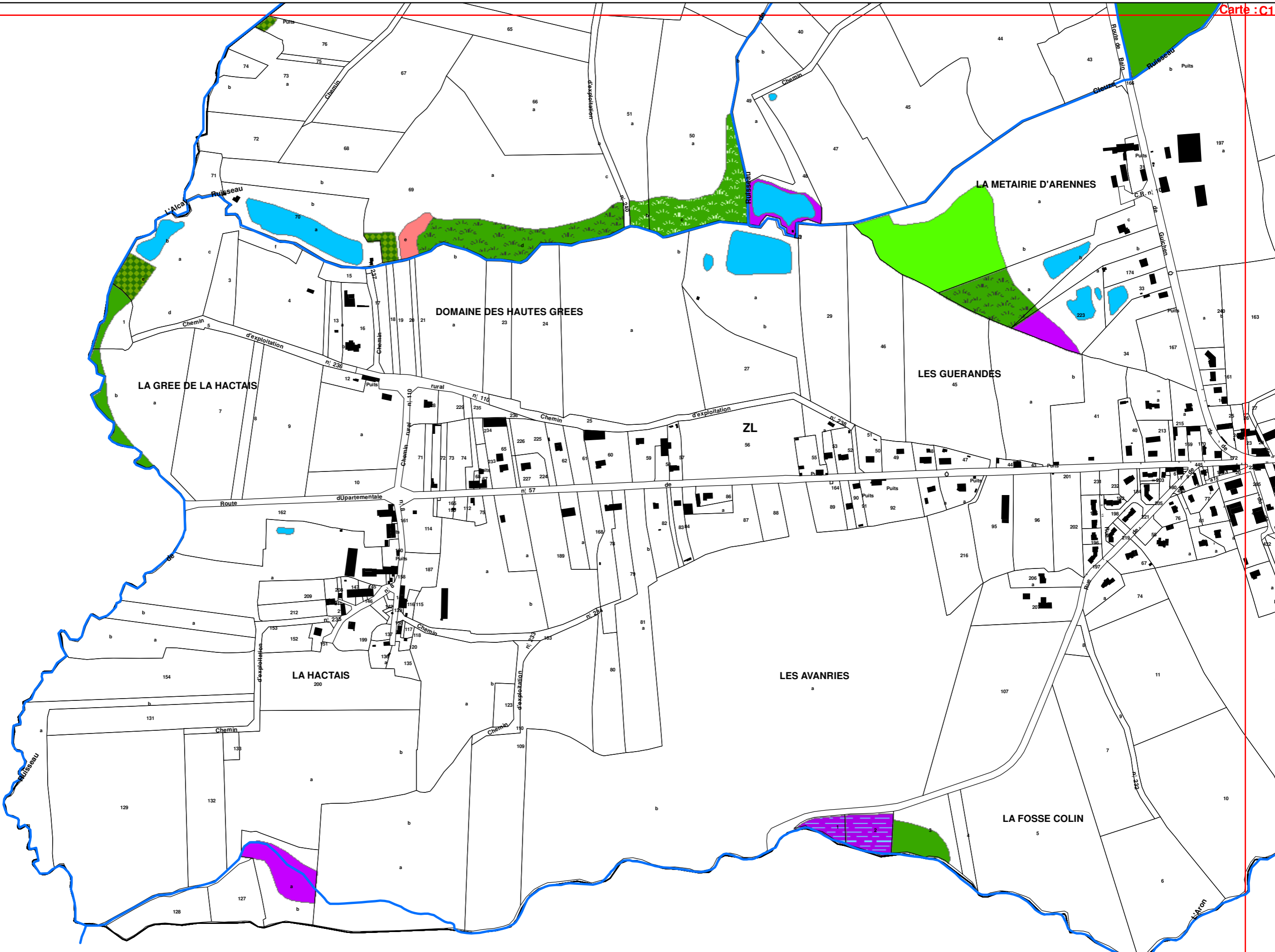


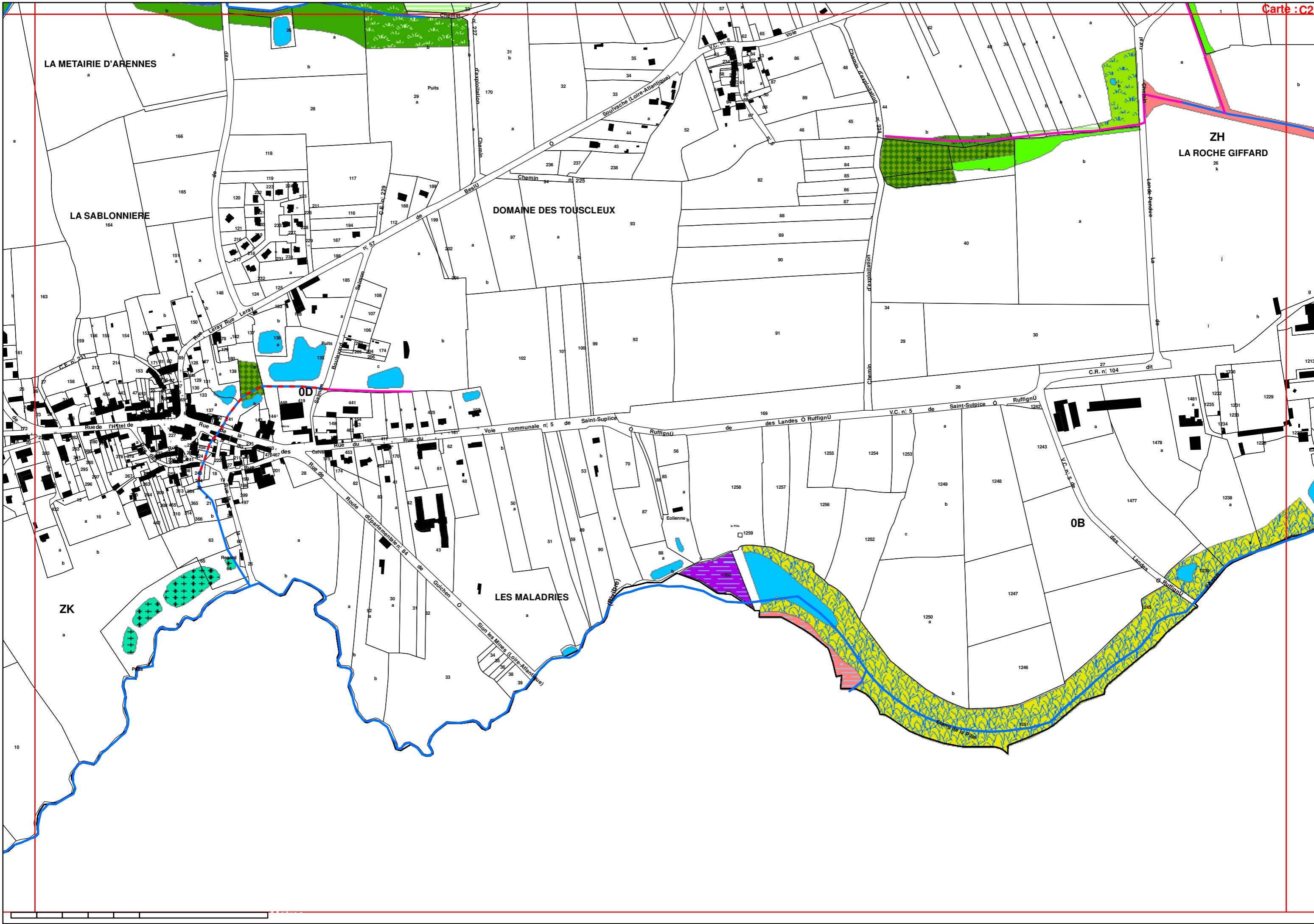












LA METAIRIE D'ARENNES

LA SABLONNIERE

DOMAINE DES TOUSCLEUX

ZH
LA ROCHE GIFFARD

OD

OB

ZK

LES MALADRIES

