

Commune de Sainte-Anne-sur-Vilaine

Atlas des zones humides et des cours d'eau

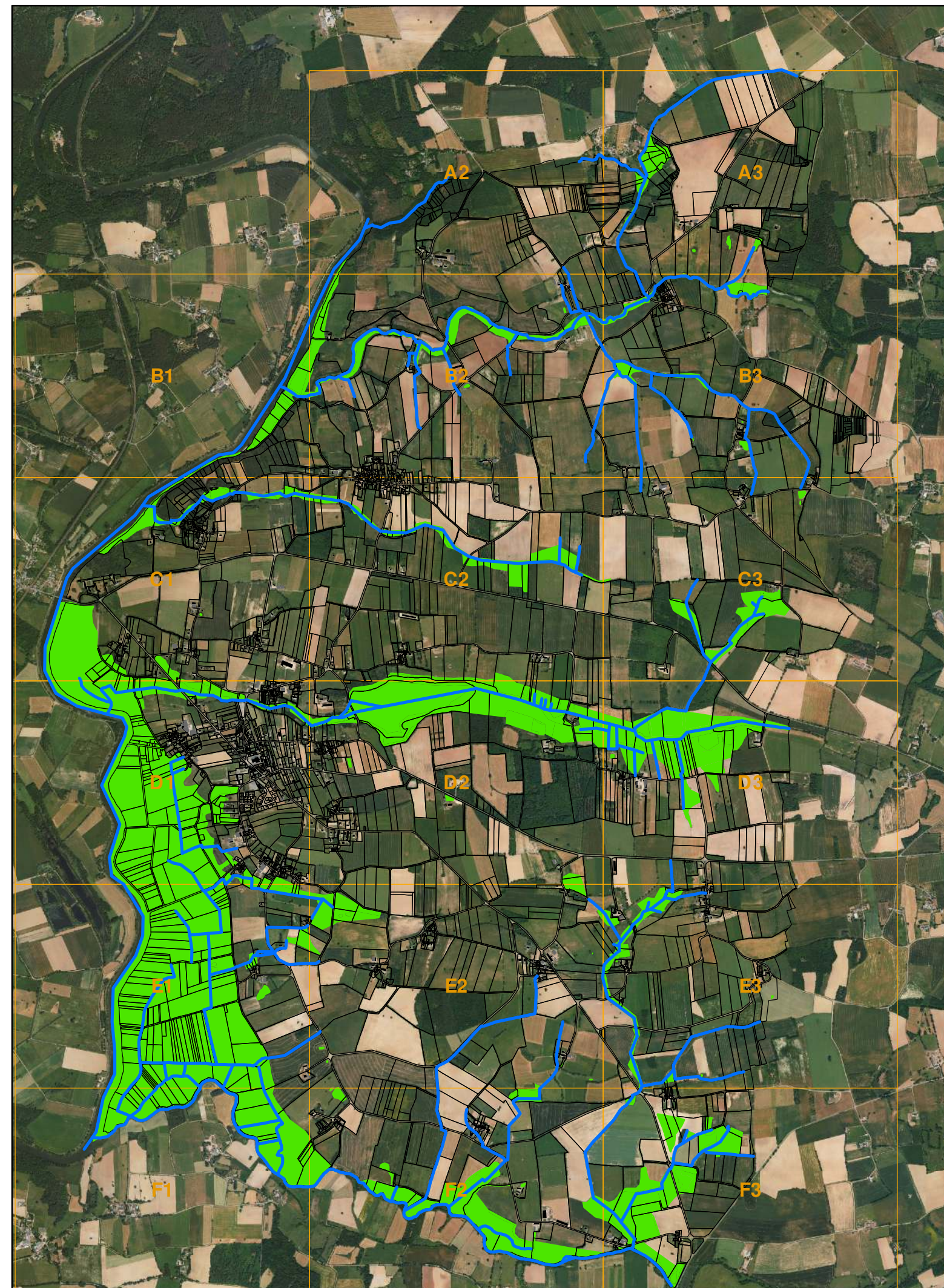
Atlas cartographique des zones humides

Projection cartographique Lambert II étendu
Echelle : 1/5000

Sources : Direction générale des impôts (cadastre),
dmEAU (zones humides et cours d'eau), Site Natura 2000 (IAV)



Réalisé par dm.EAU
Ferme de la Chauvellerie
35150 JANZÉ
02.99.47.65.63



Légende






Zones humides

-  prairies
-  bois
-  Marais de Vilaine
-  haies
-  plans d'eau
-  autres
-  cultures
-  zones aquatiques

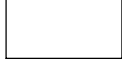



Réseau hydrographique

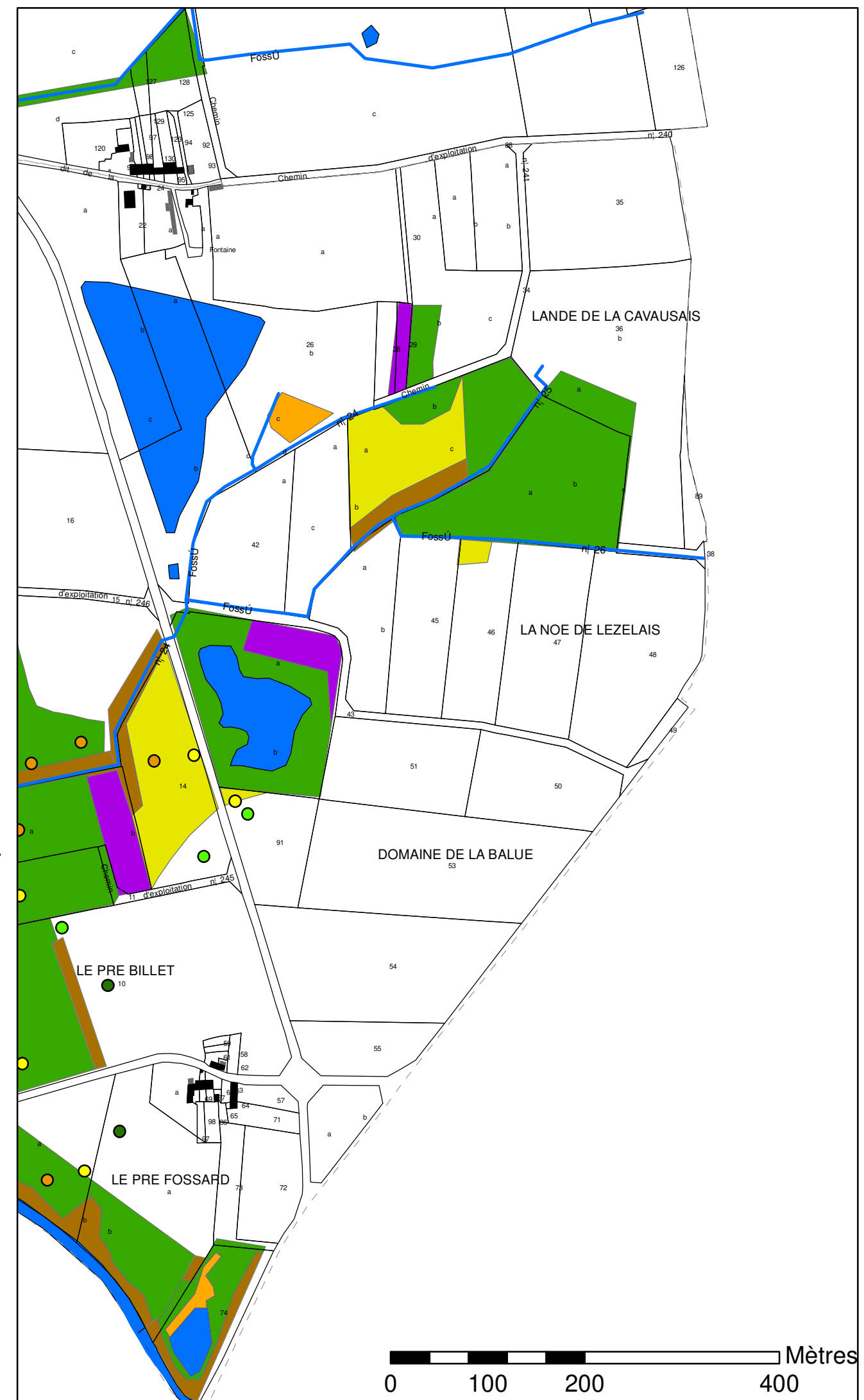
-  Cours d'eau

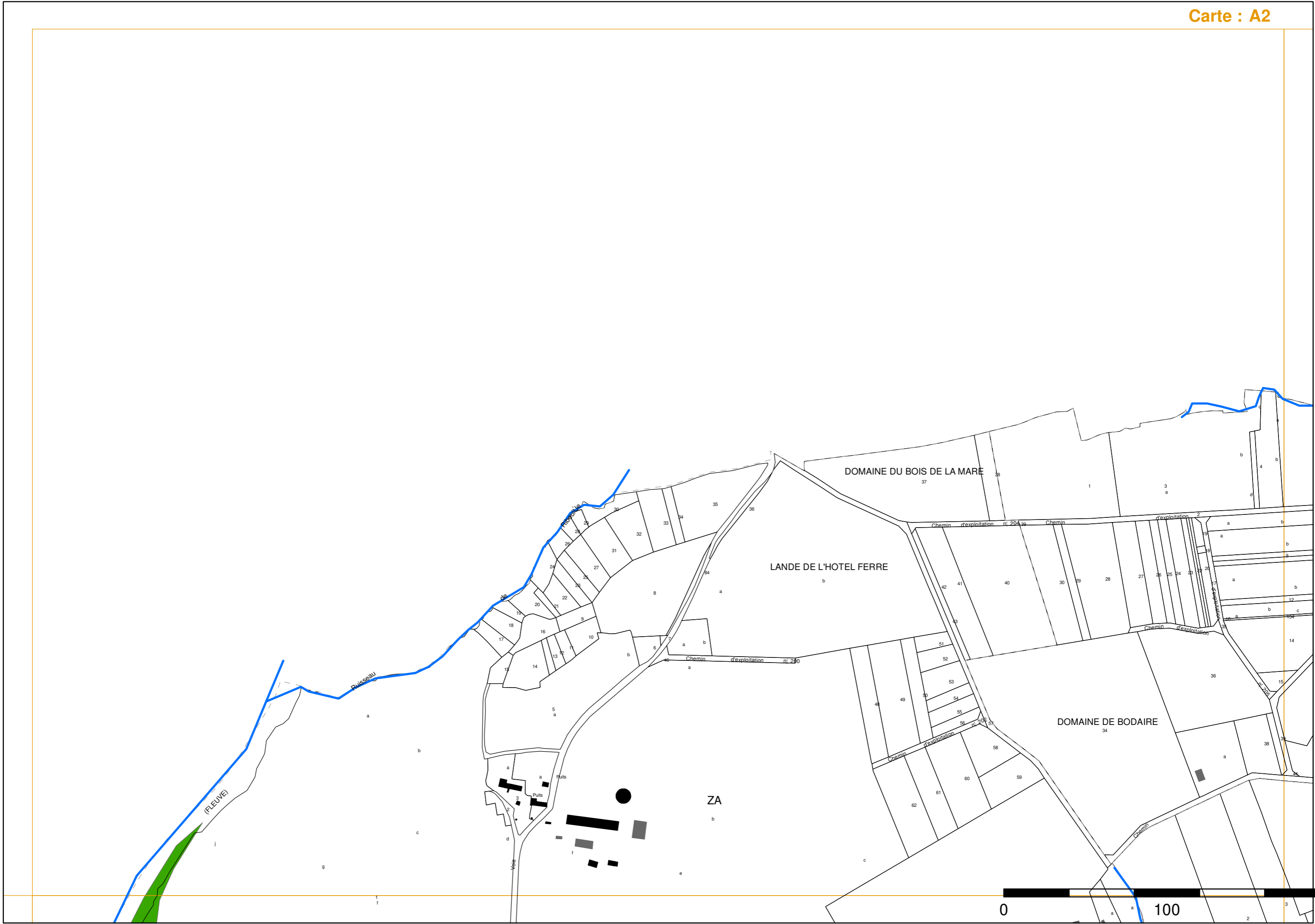
Caractérisation de l'hydromorphie des sols

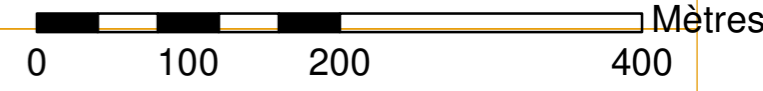
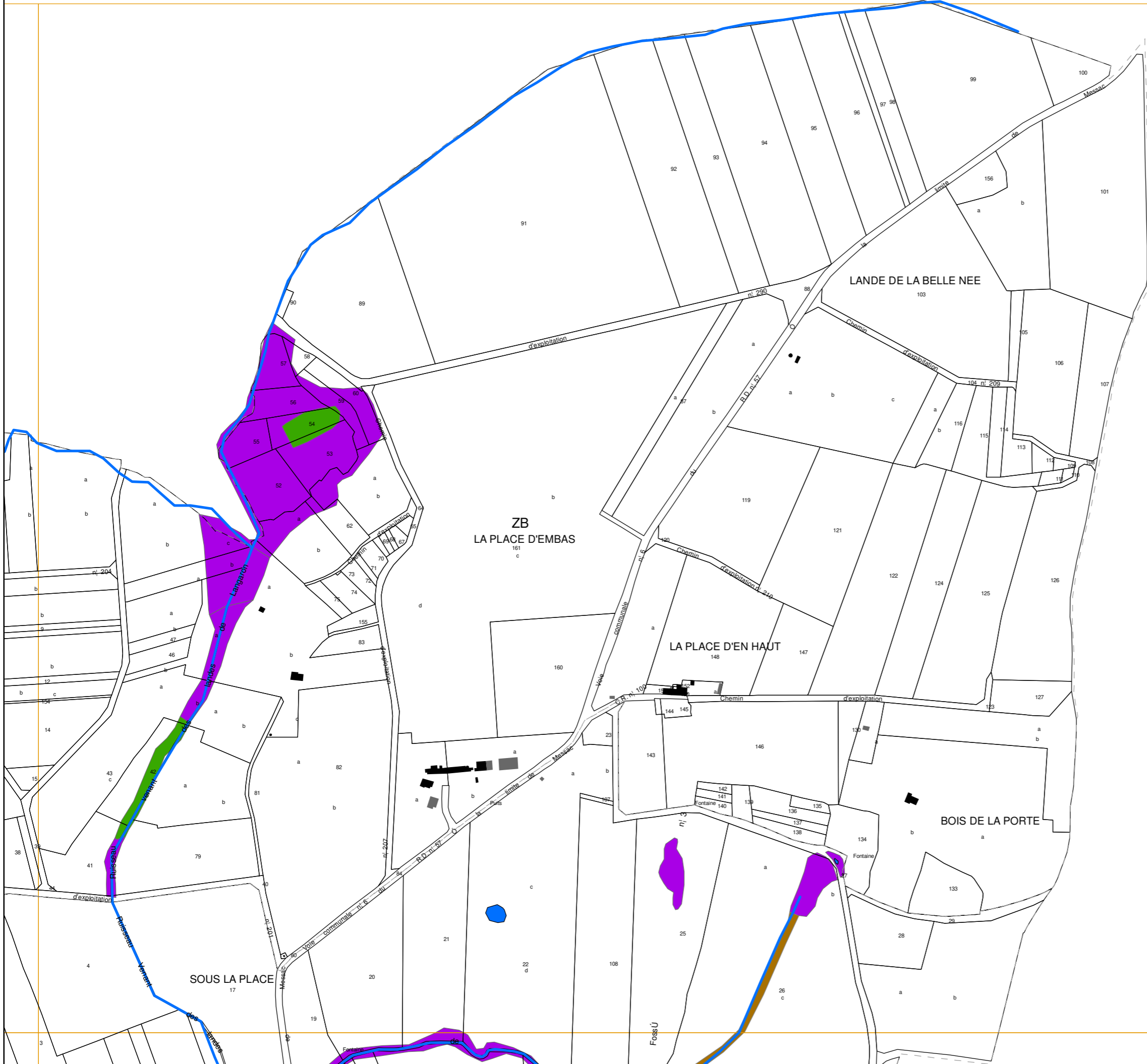
-  (0) Pas de traces d'hydromorphie
-  (4) Traces d'hydromorphie de faible intensité à plus de 50 cm de profondeur
-  (5) Traces d'hydromorphie en surface de faible intensité, s'intensifiant en profondeur
-  (6) Traces d'hydromorphie en surface de forte intensité, s'intensifiant en profondeur
-  (7) Pseudogley généralisé

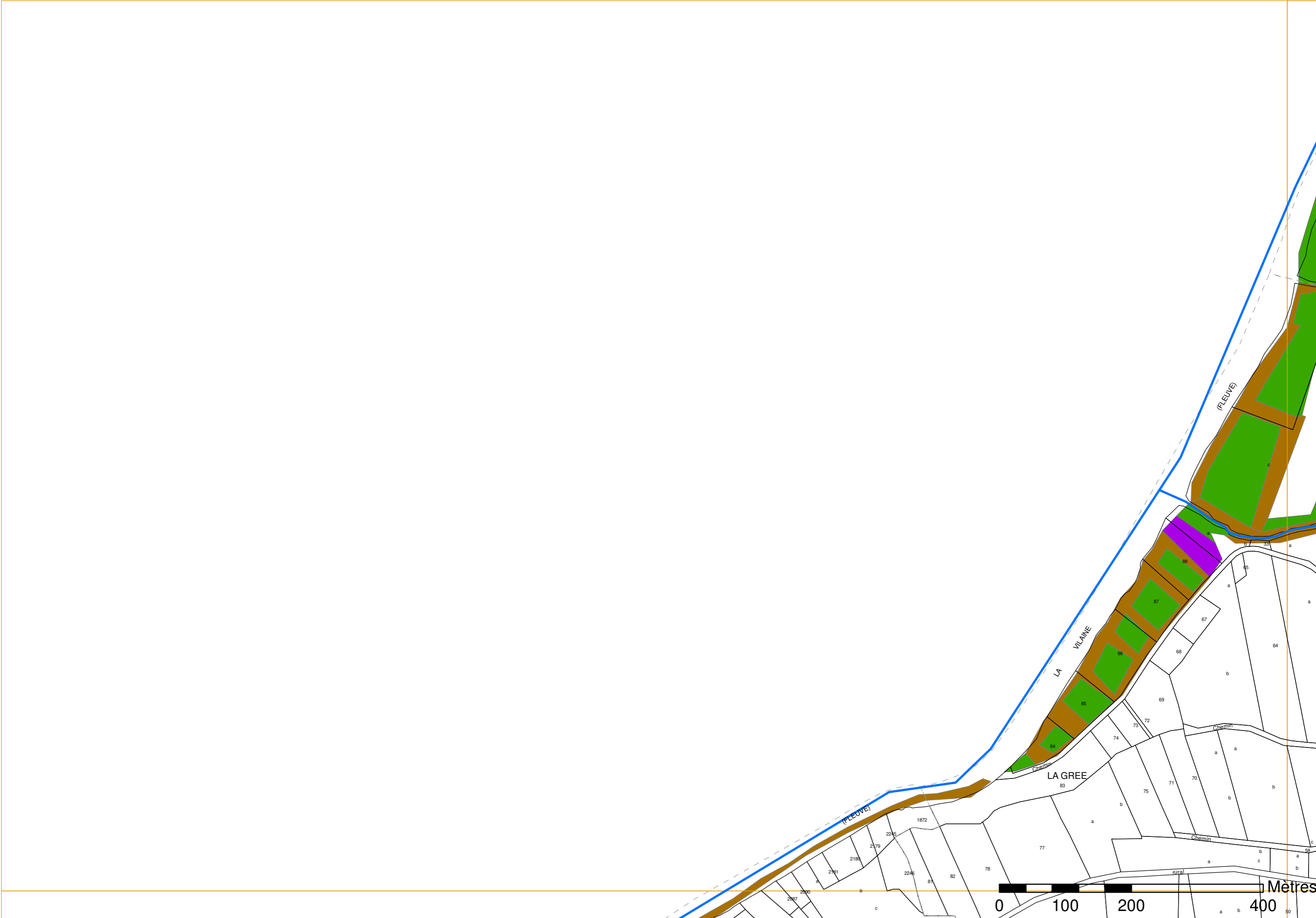
Éléments du cadastre

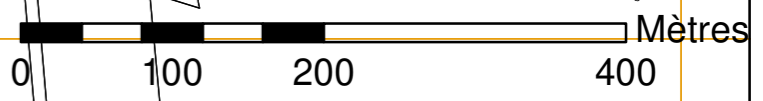
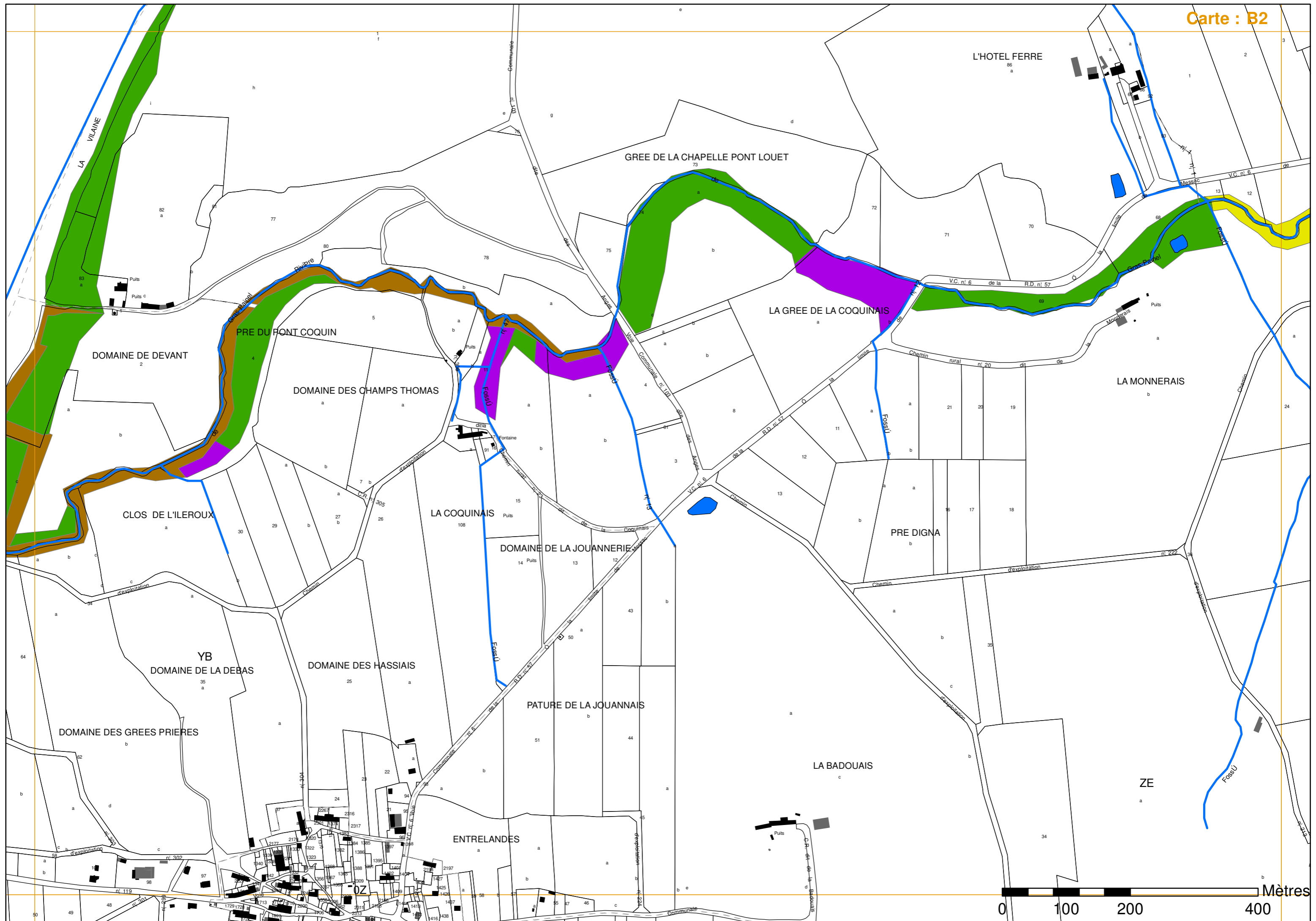
-  Parcelles
-  Bâti dur
-  Bâti léger
-  Section

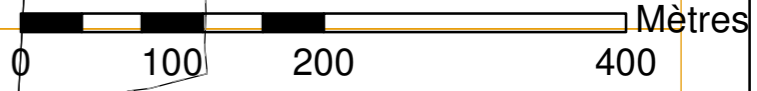
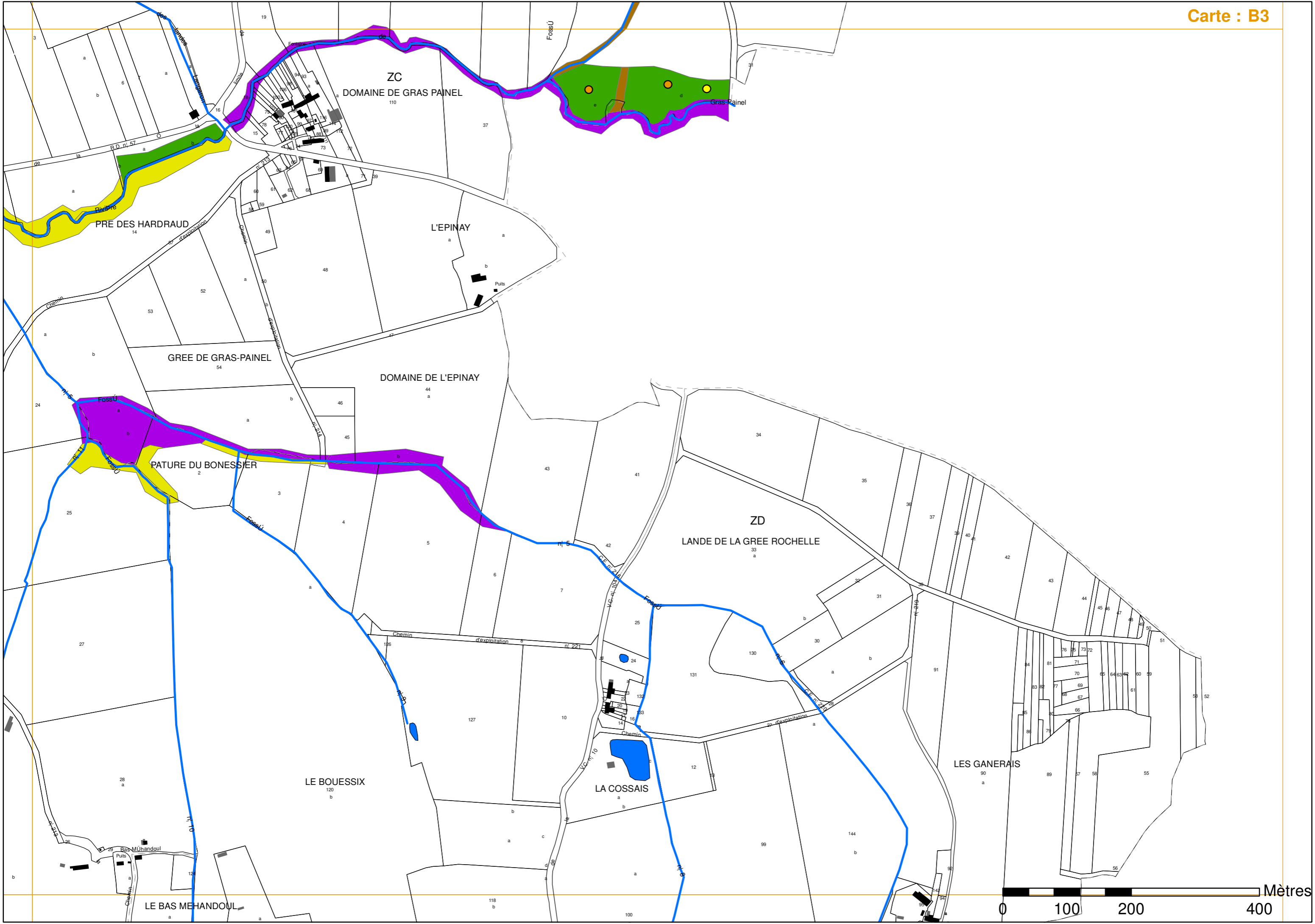


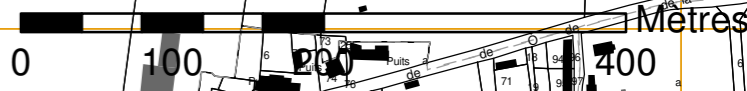
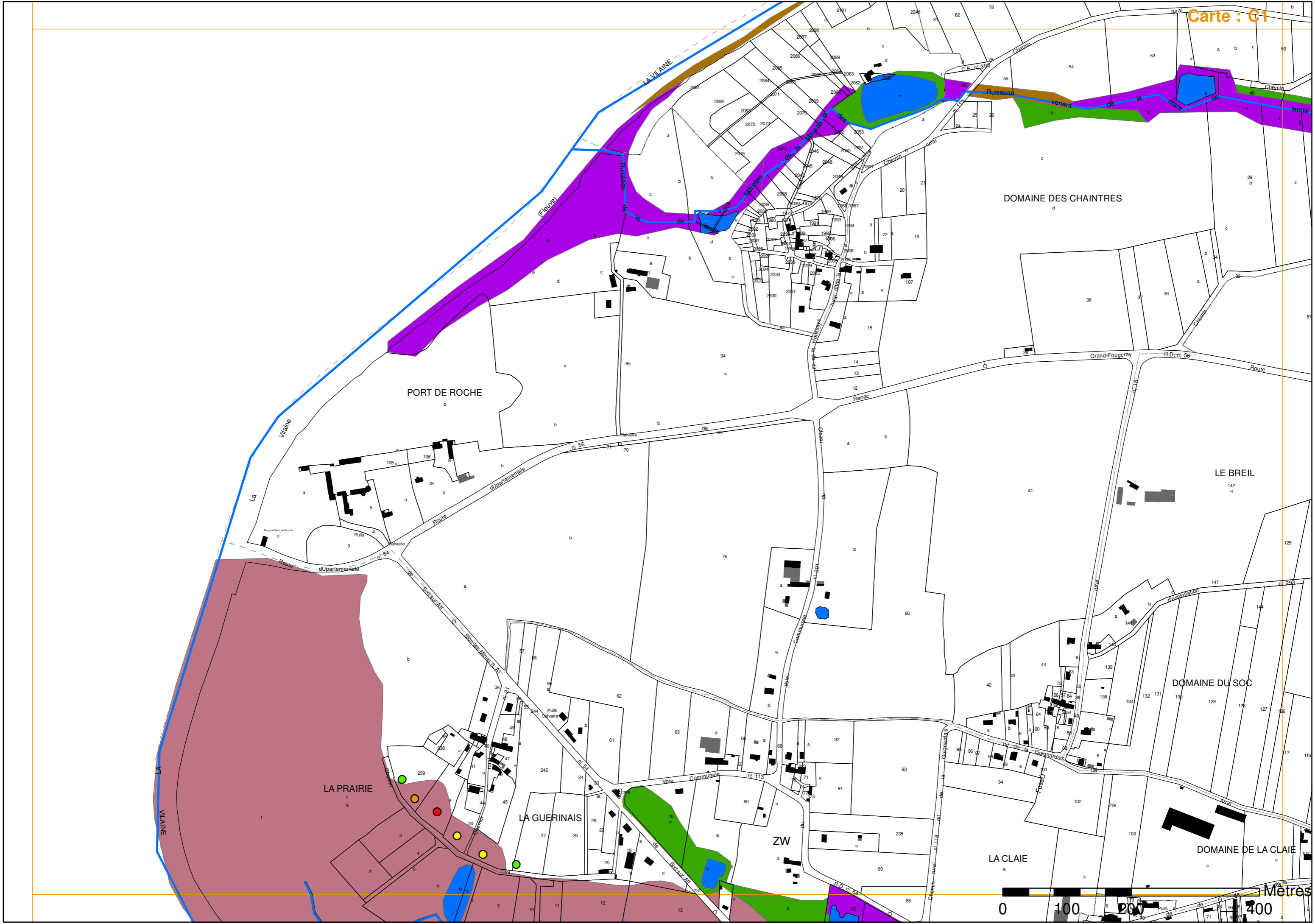




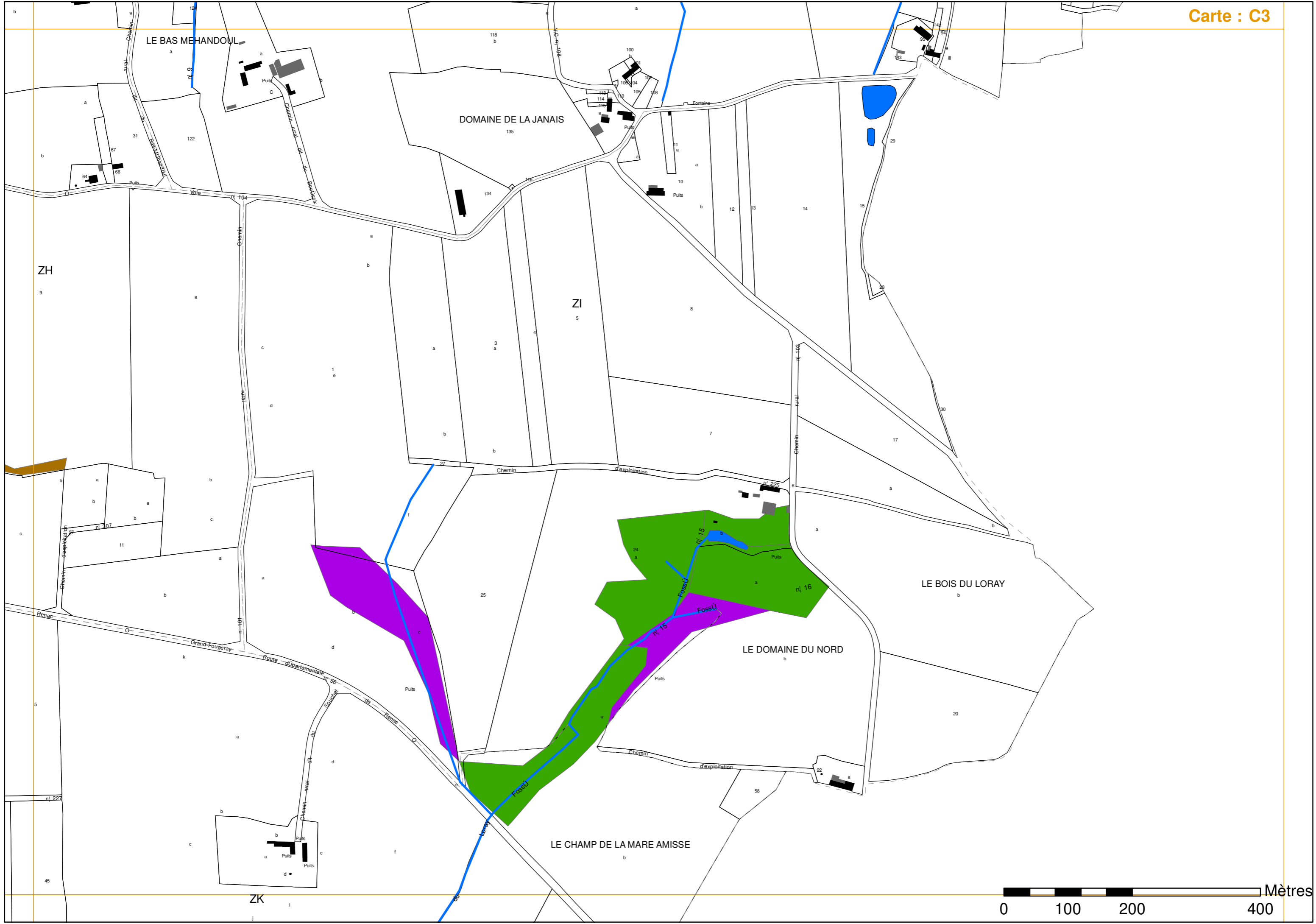


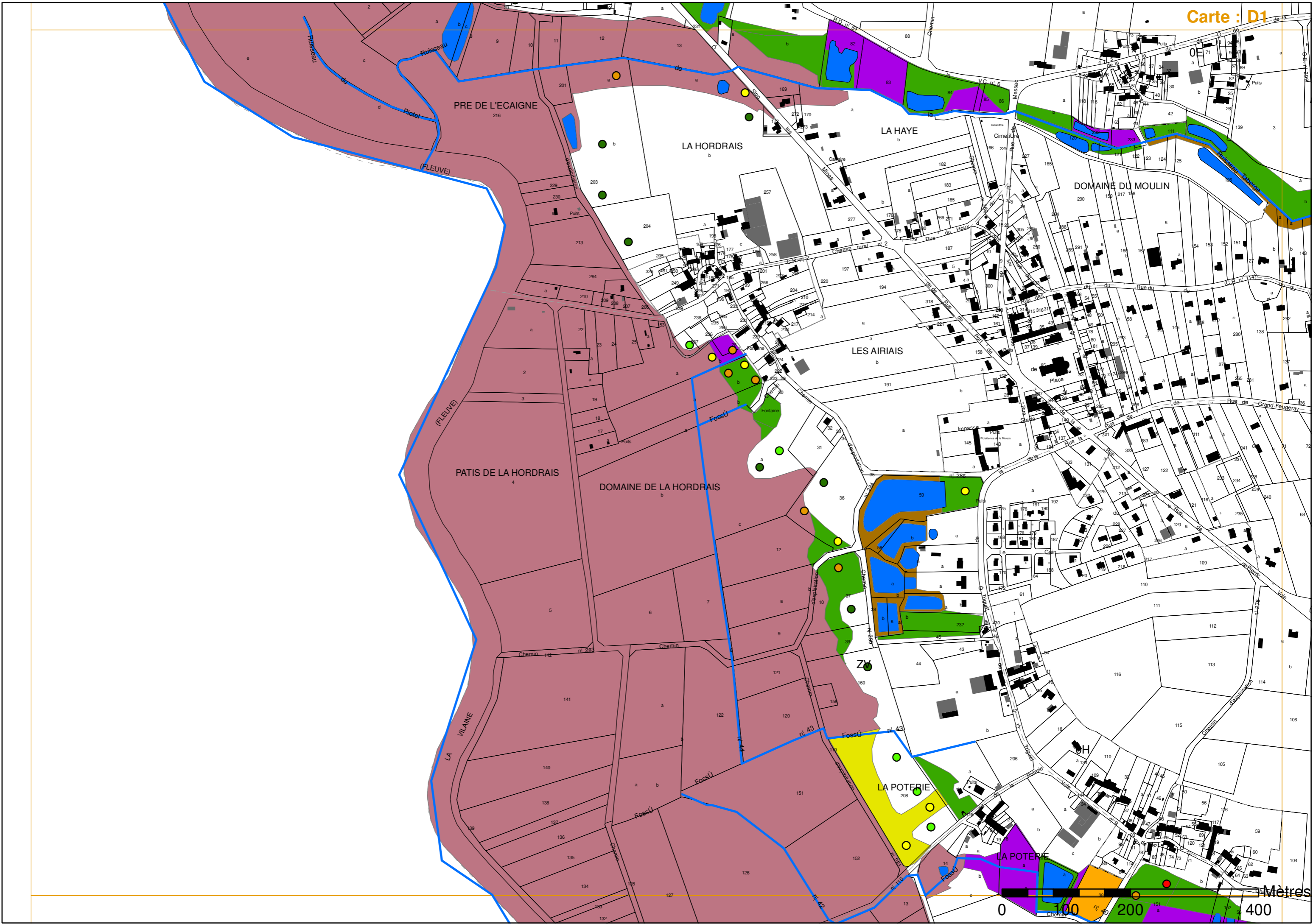


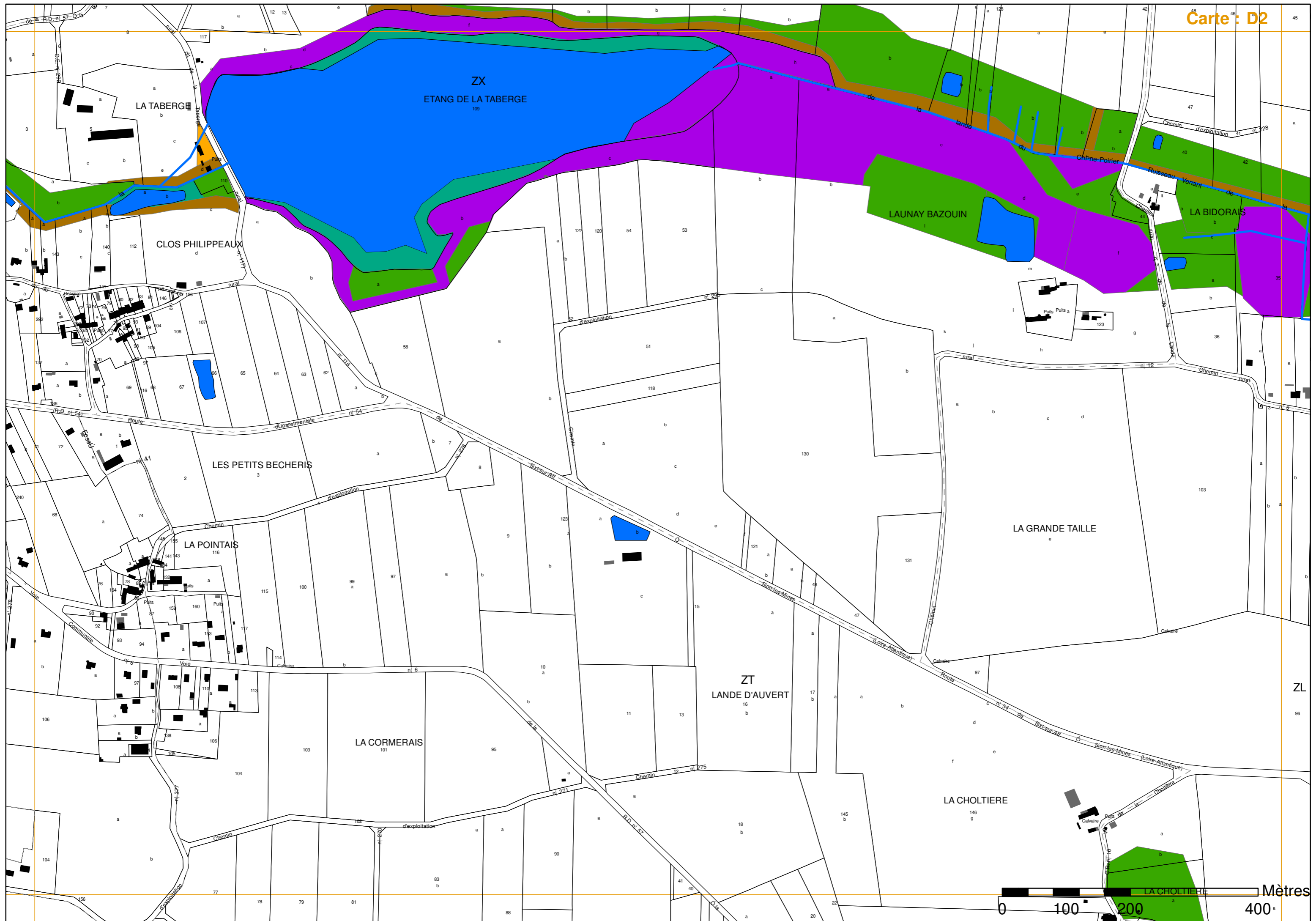


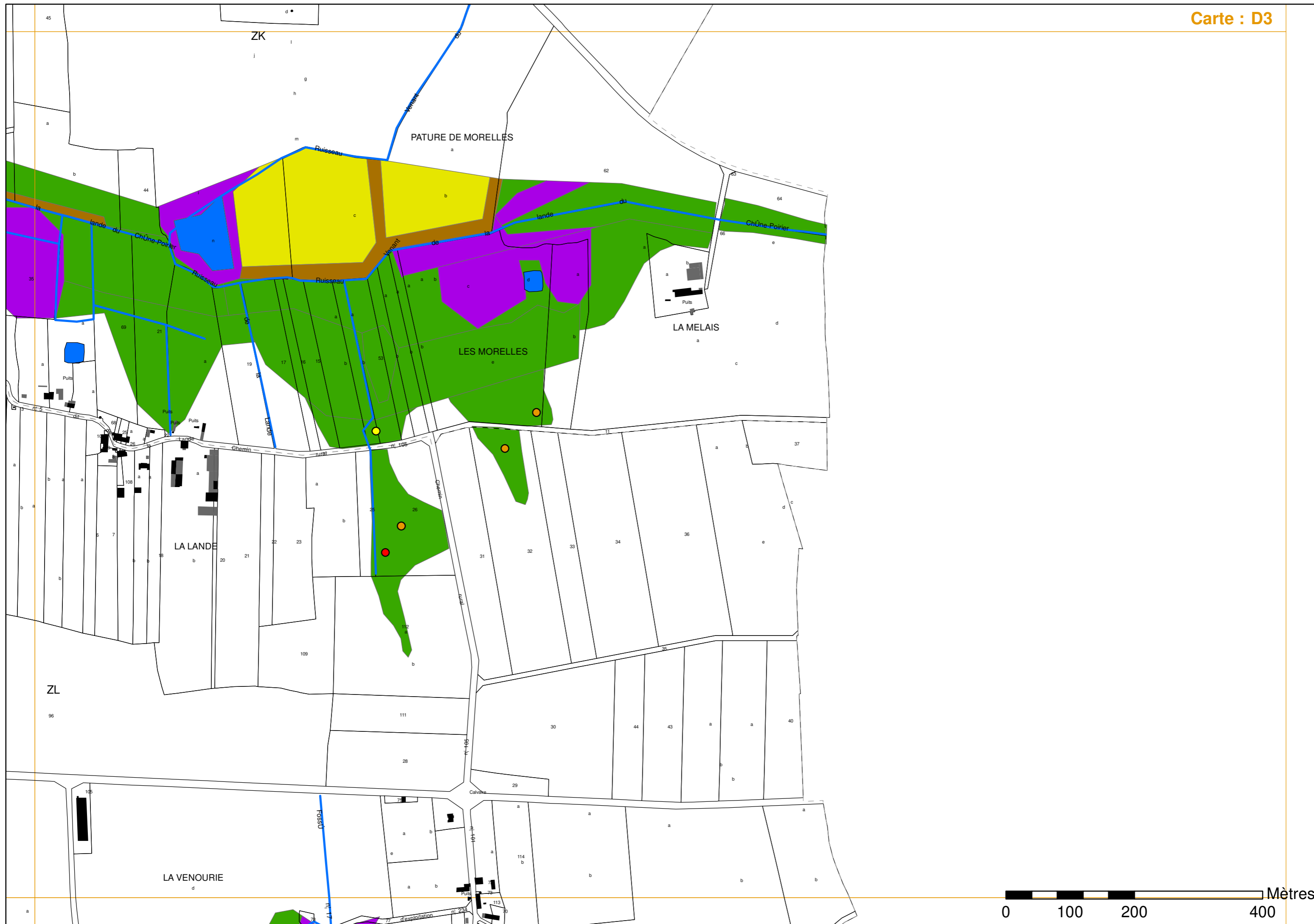


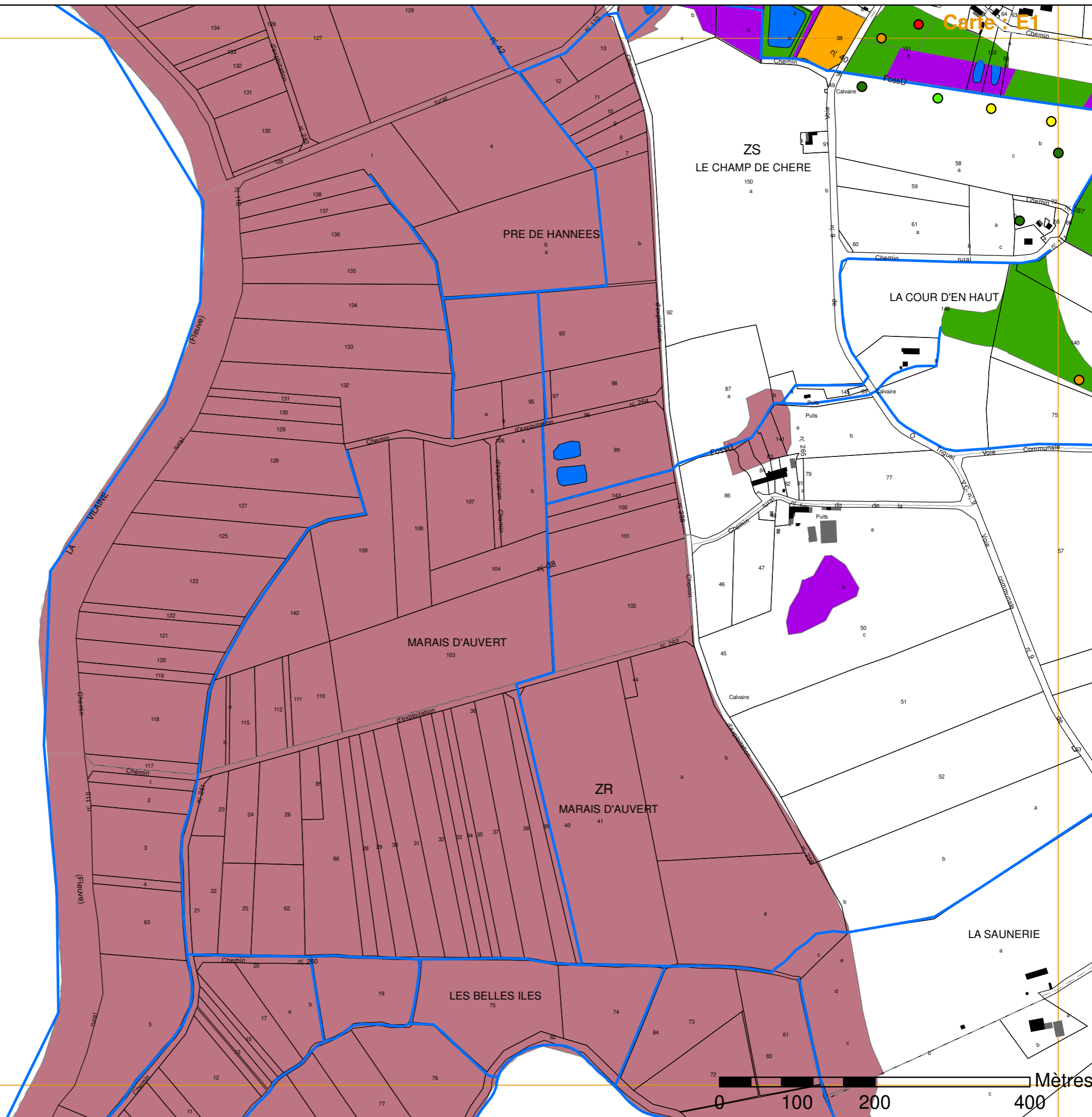












ZS
LE CHAMP DE CHERE

PRE DE HANNEES

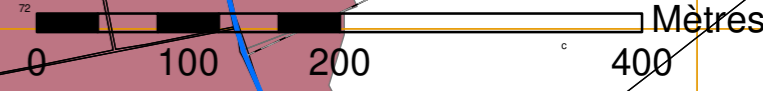
LA COUR D'EN HAUT

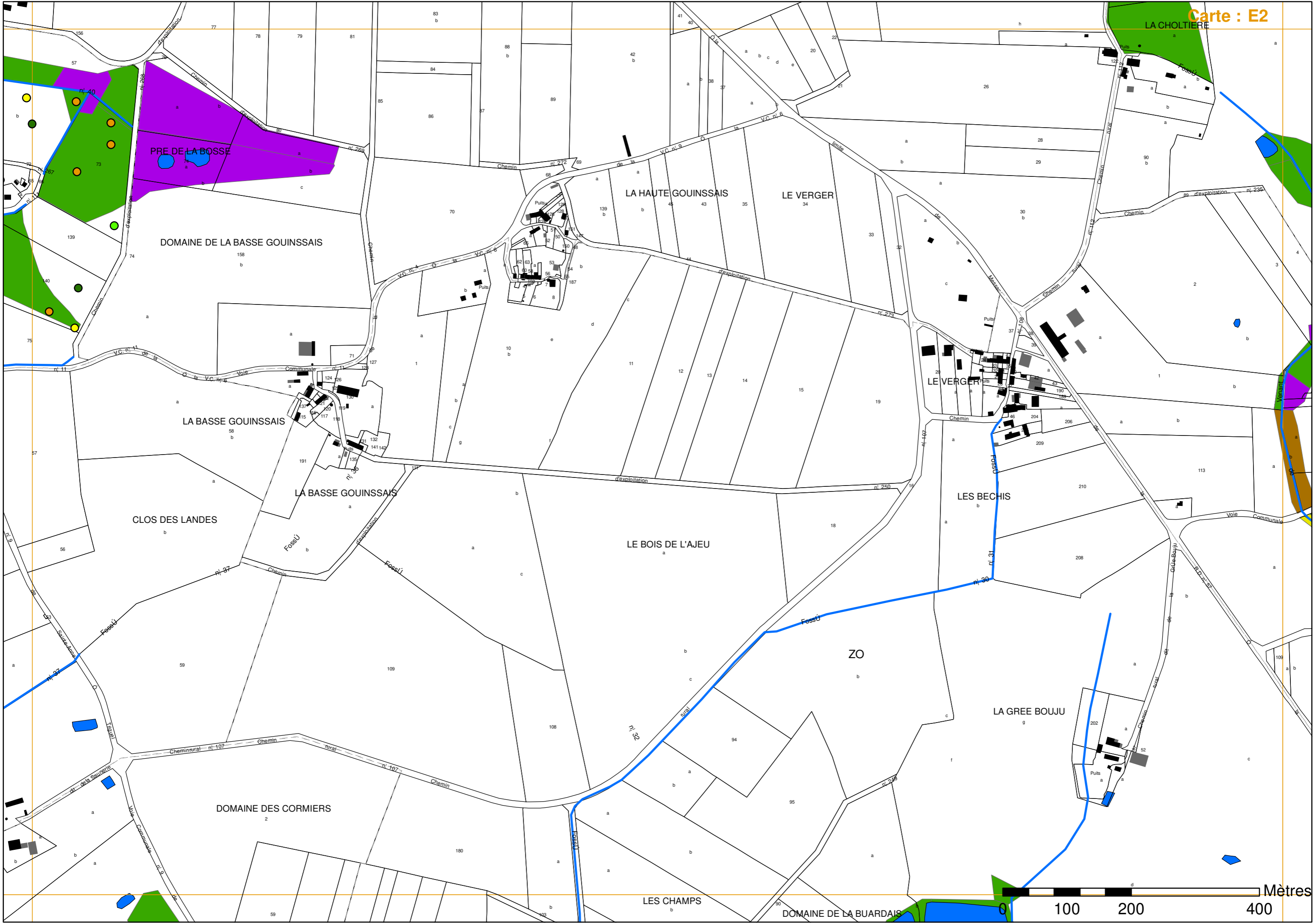
MAR AIS D'AUVERT

ZR
MAR AIS D'AUVERT

LES BELLES ILES

LA SAUNERIE





PRE DE LA BOSSE

DOMAINE DE LA BASSE GOUINSSAIS

LA HAUTE GOUINSSAIS

LE VERGER

LA BASSE GOUINSSAIS

LA BASSE GOUINSSAIS

CLOS DES LANDES

LE BOIS DE L'AJEU

LES BECHIS

ZO

LA GREE BOUJU

DOMAINE DES CORMIERS

LES CHAMPS

DOMAINE DE LA BUARDAIS

Mètres

